

REGIONE LAZIO

COMUNE DI ISOLA DEL LIRI
(PROVINCIA DI FROSINONE)

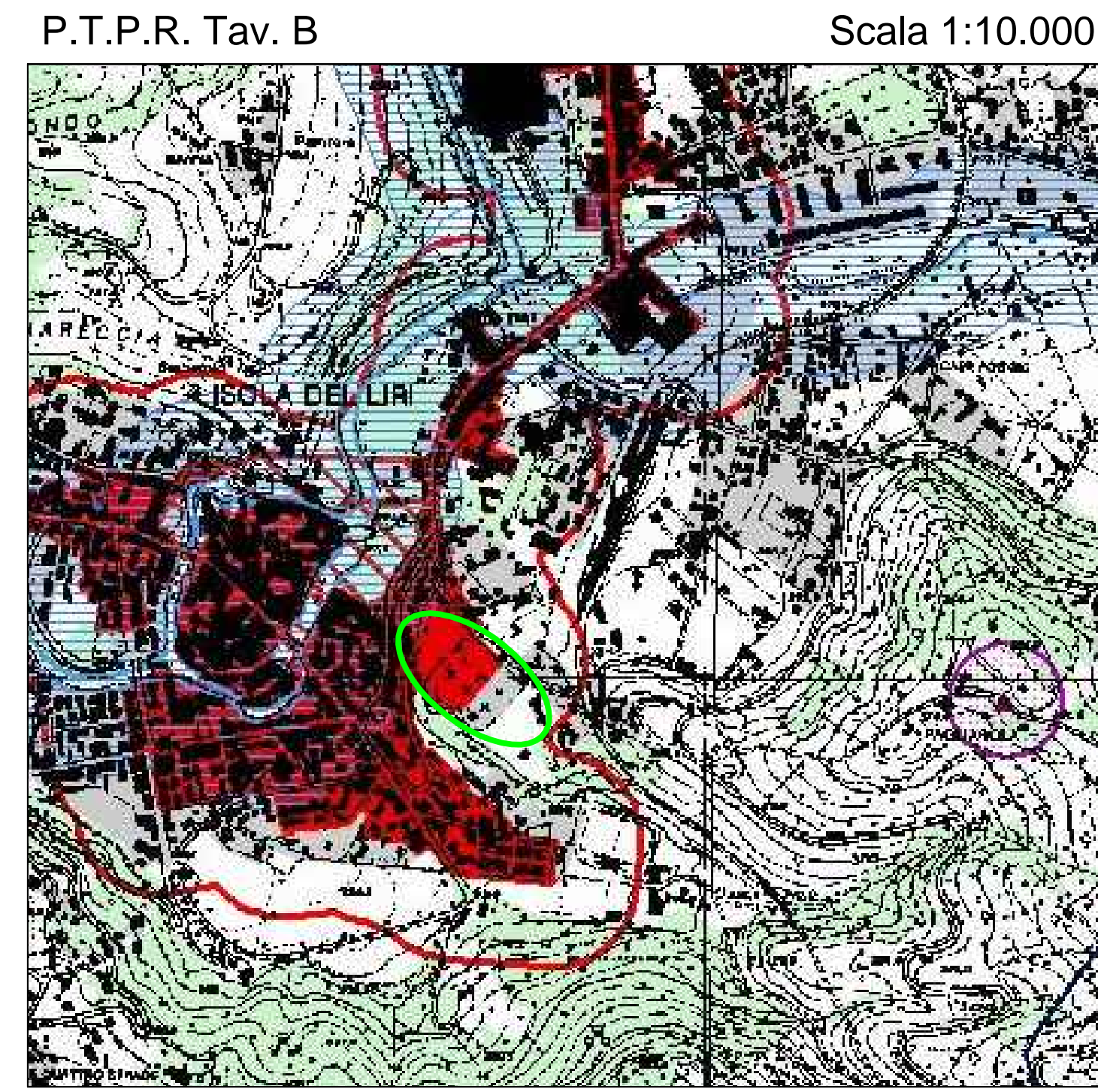
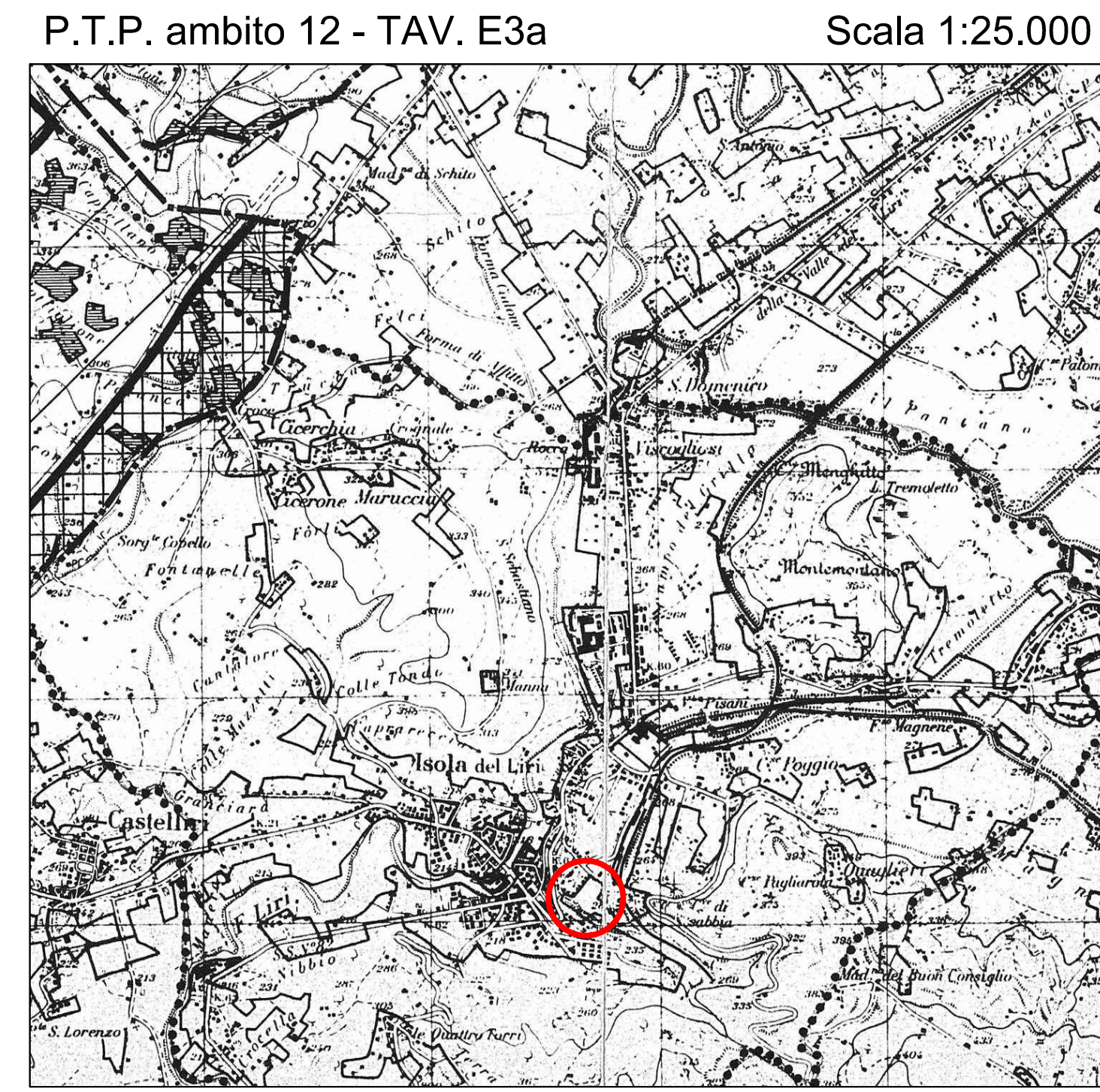
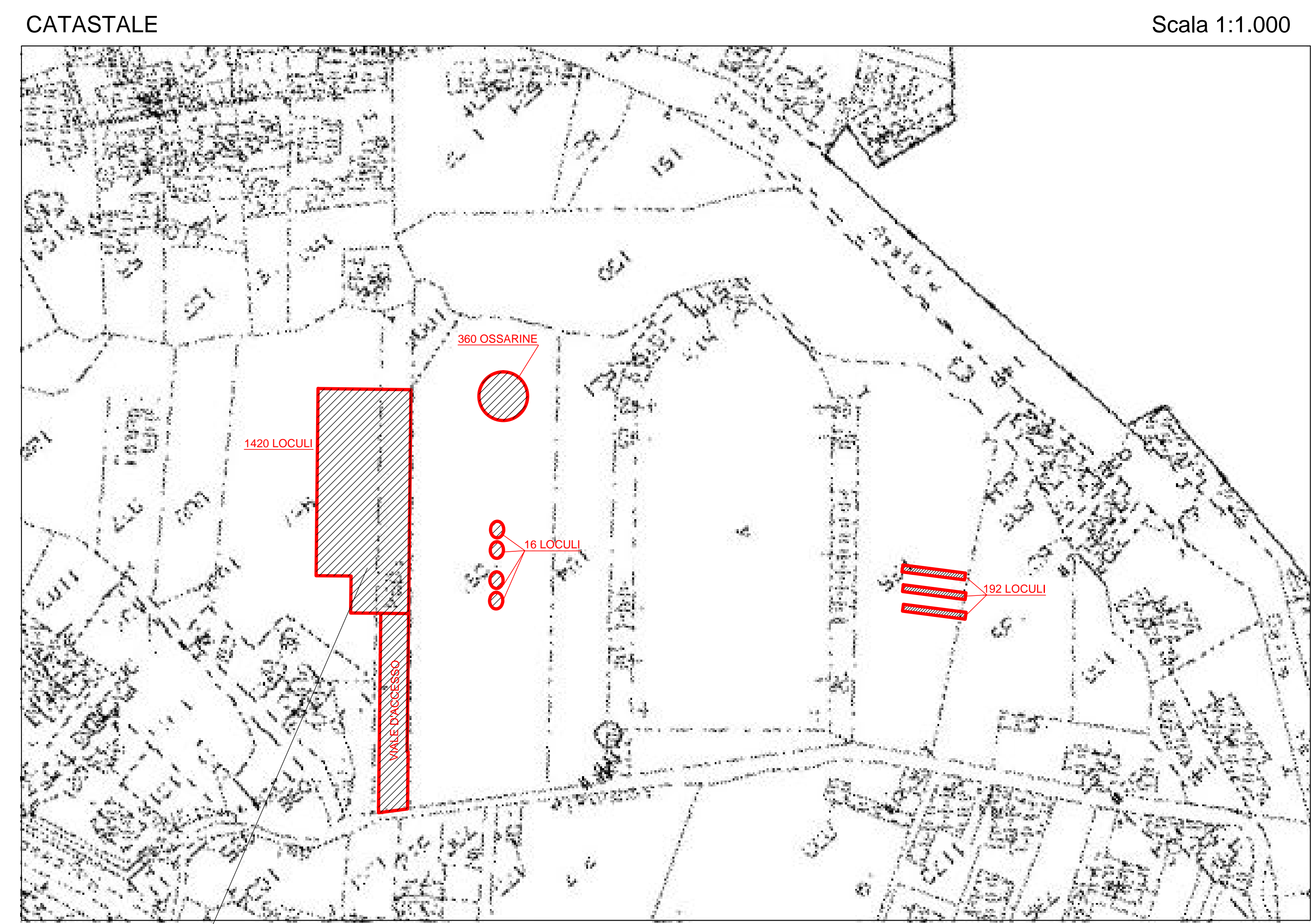
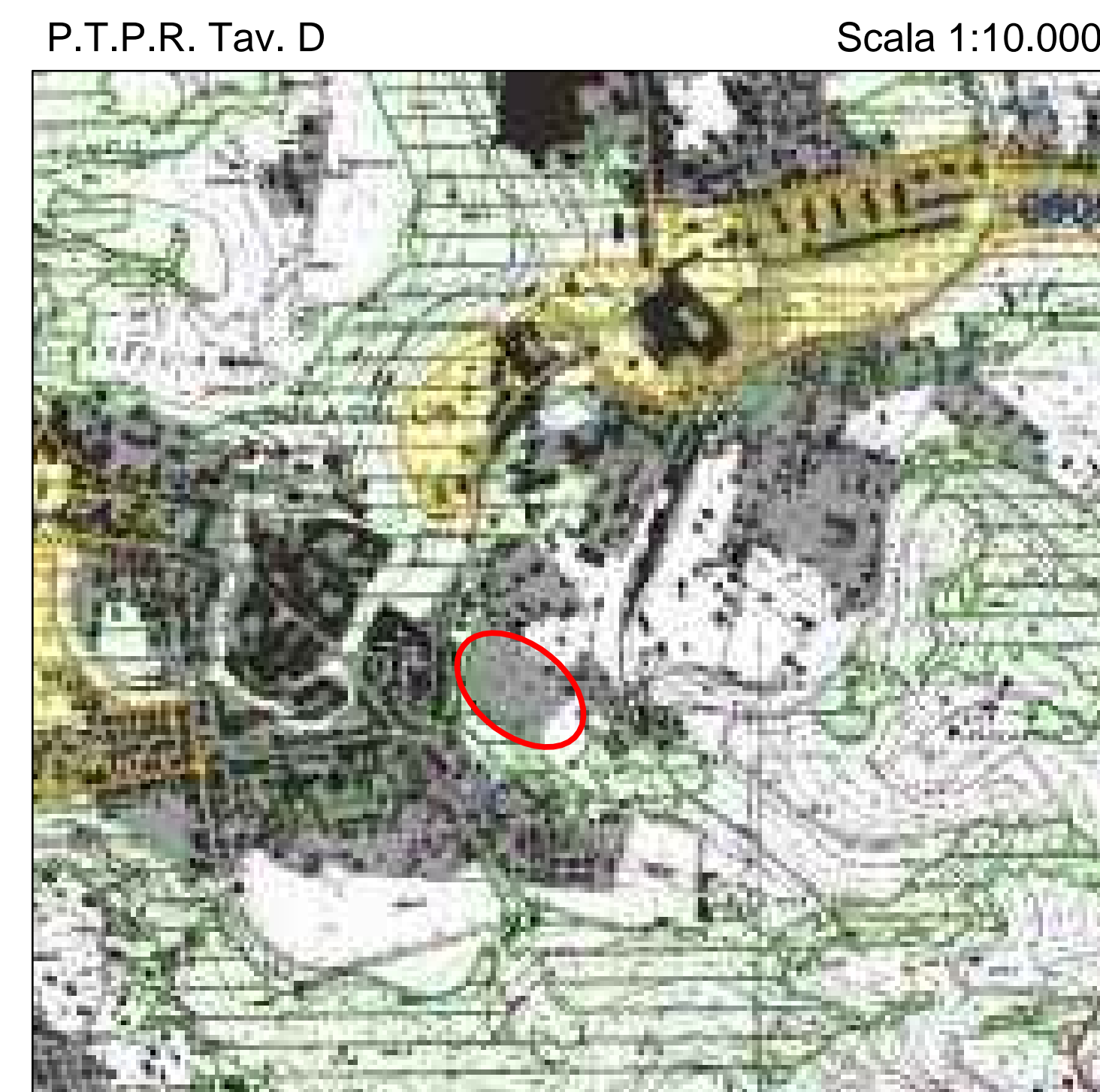
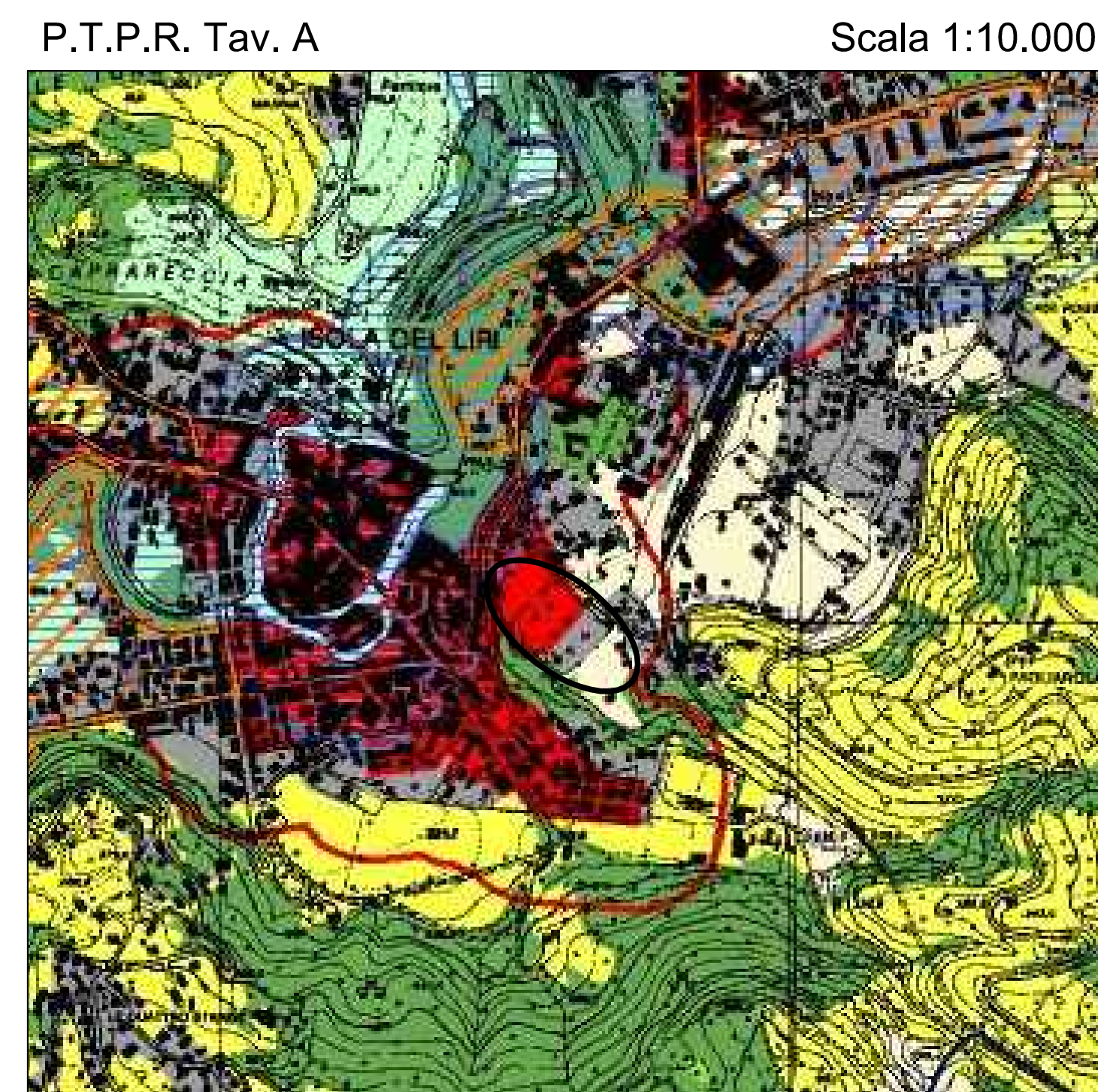
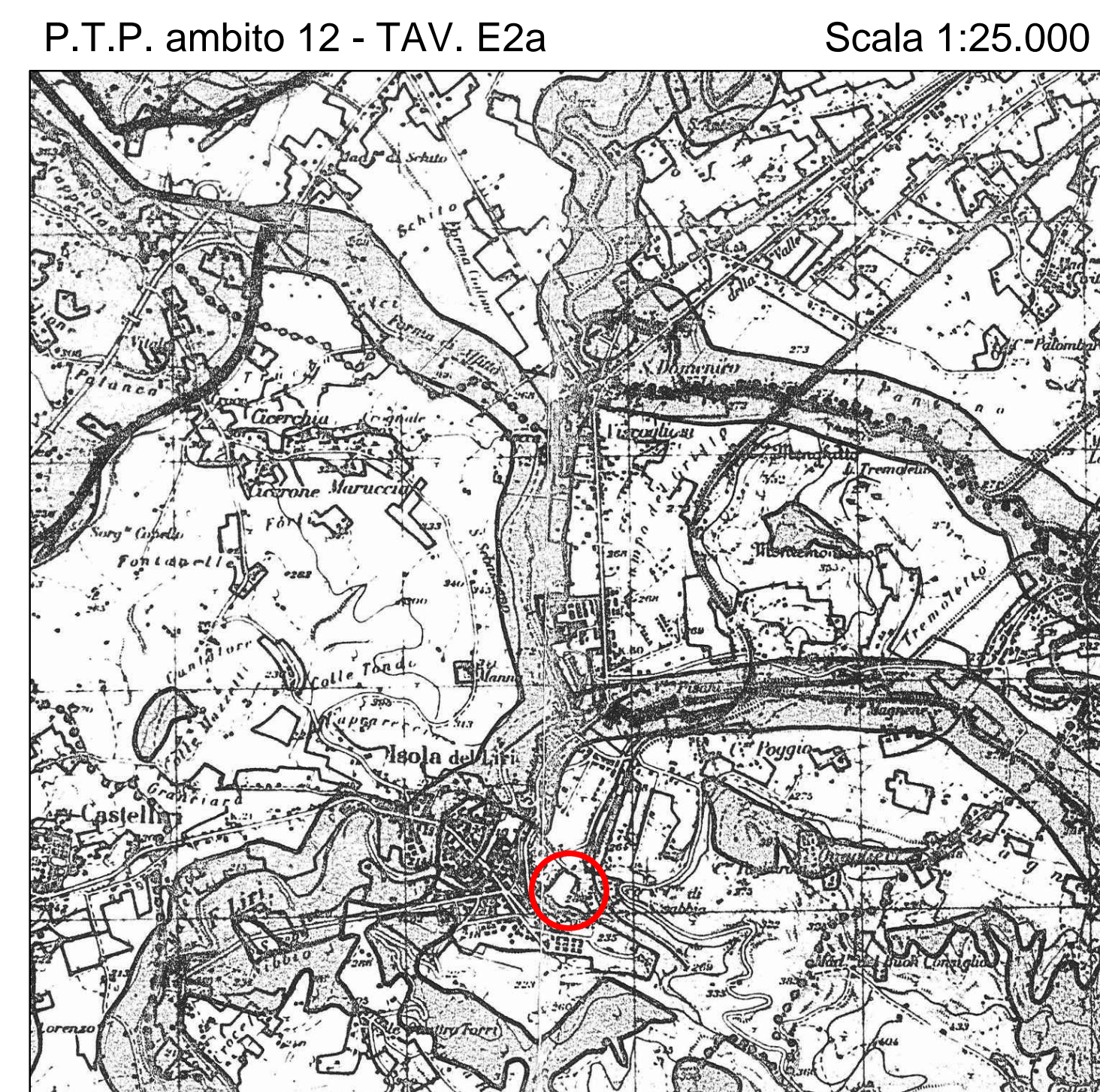
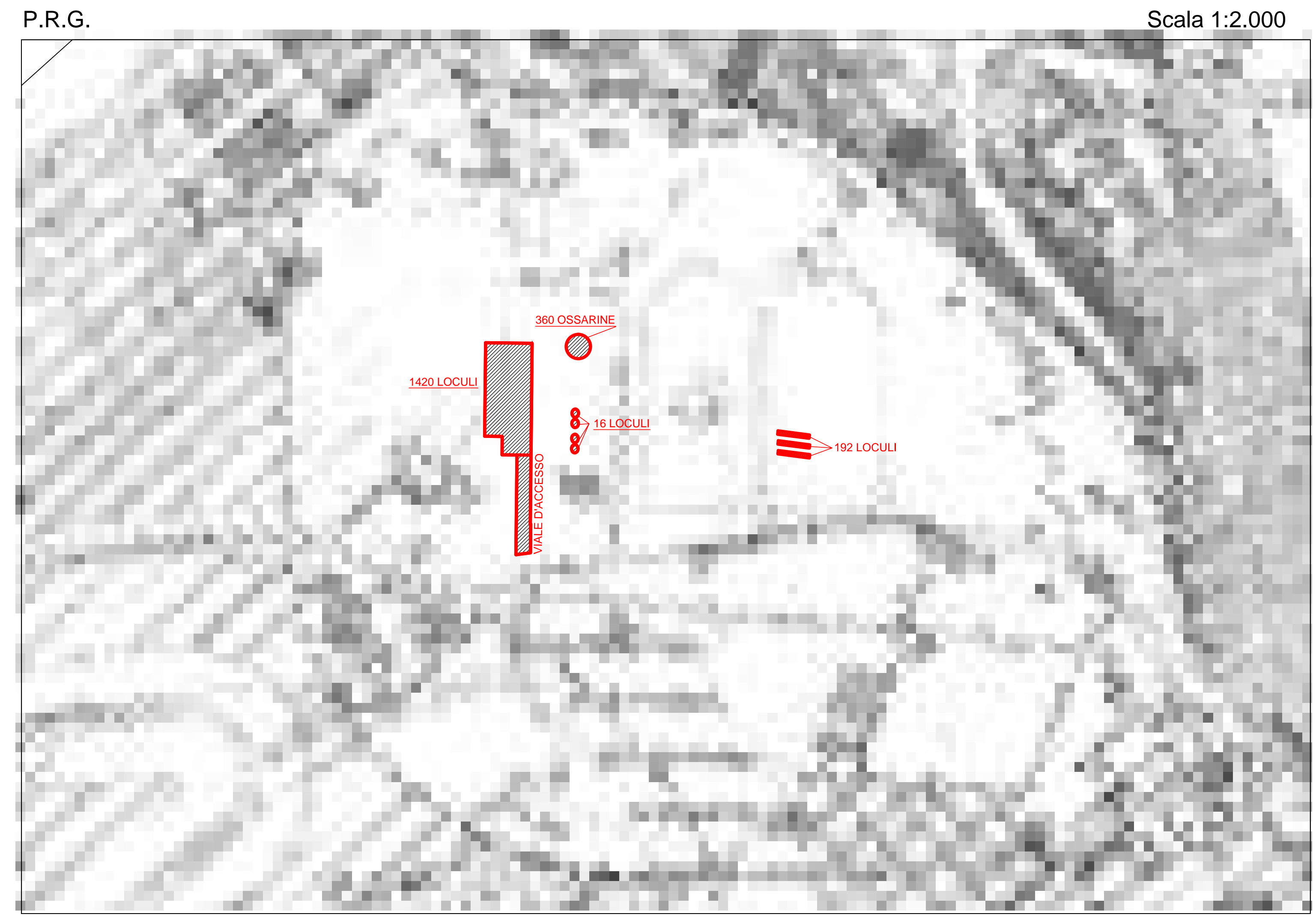
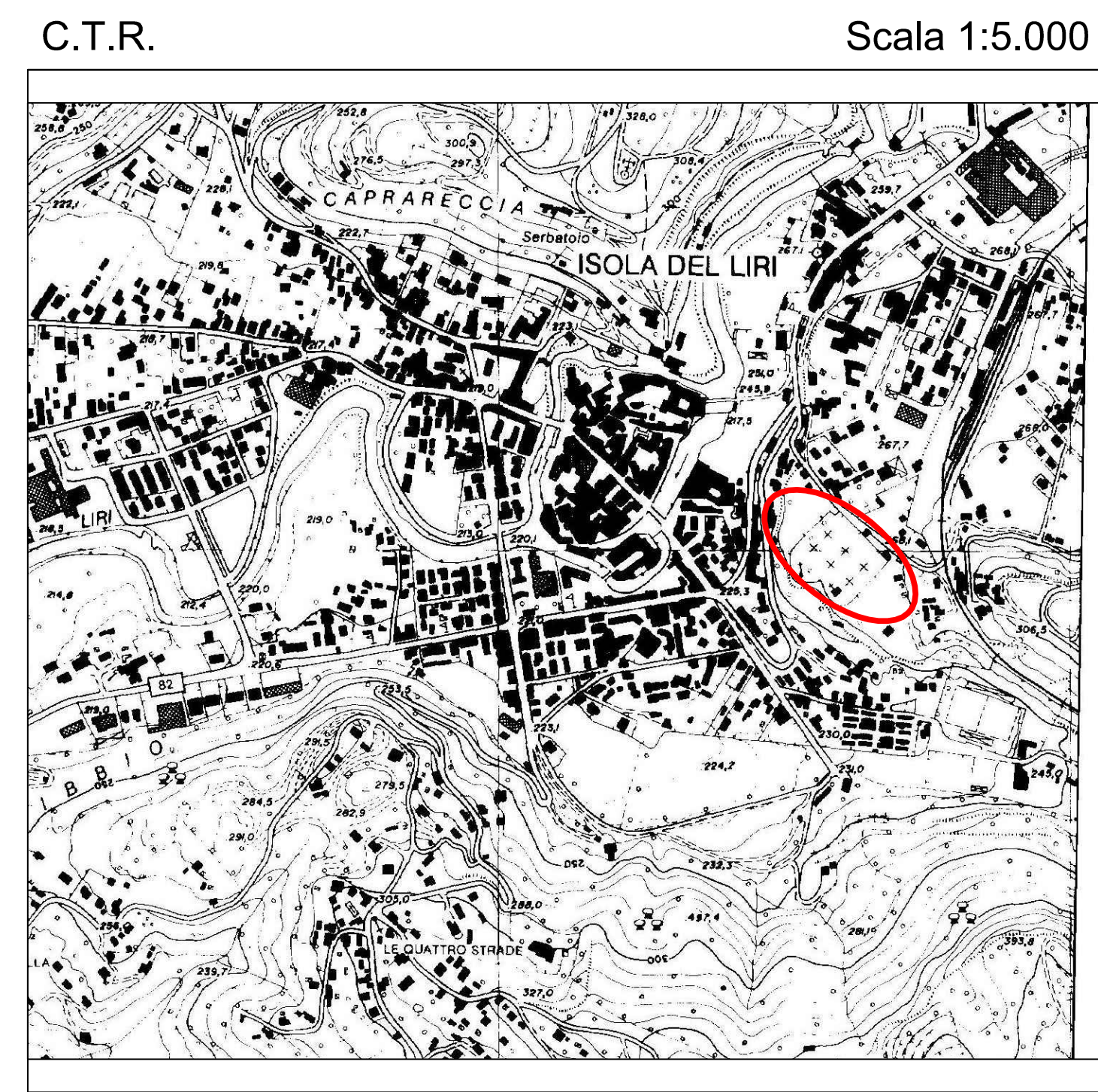
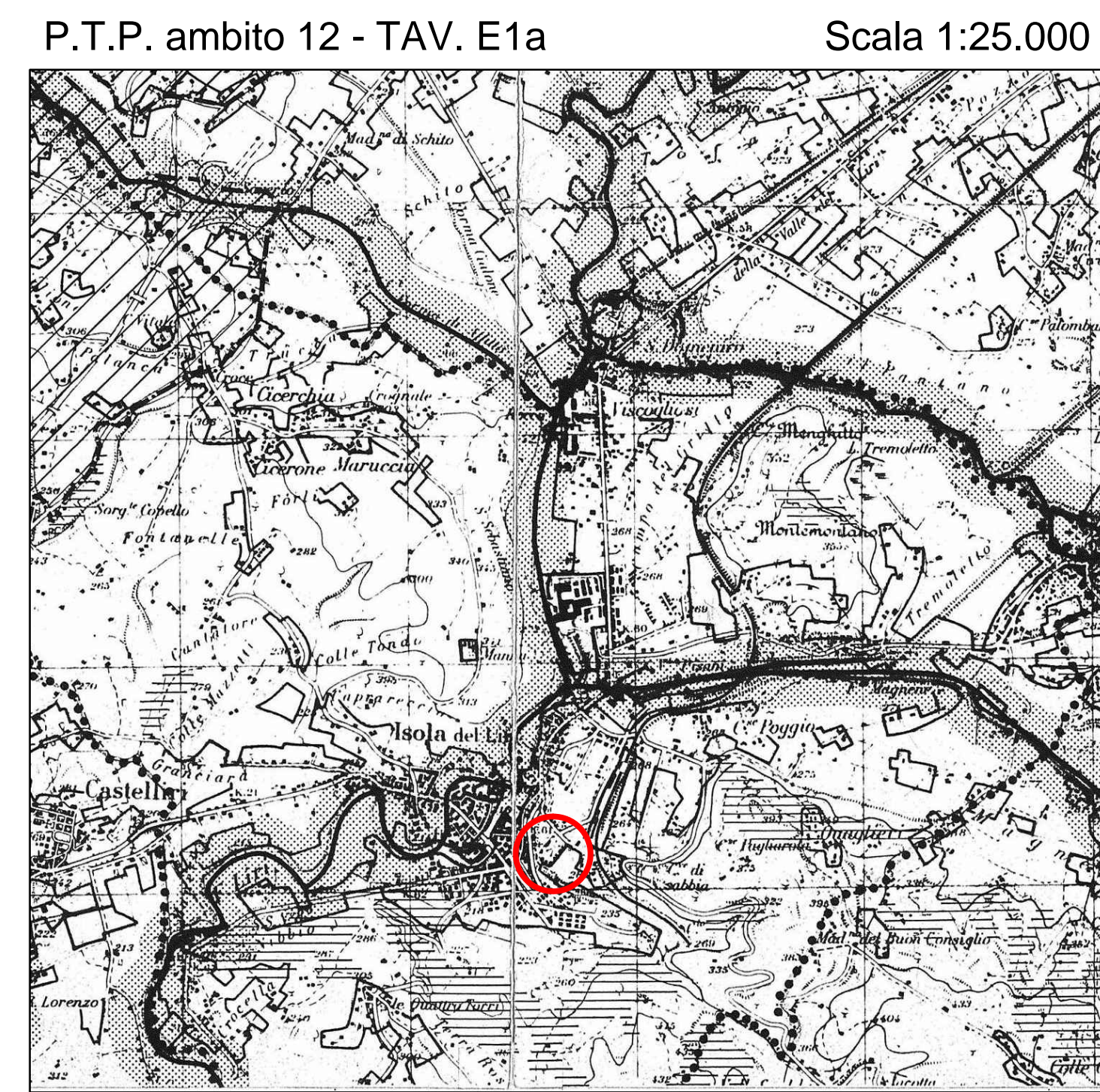
**AMPLIAMENTO DEL CIMITERO COMUNALE
DA REALIZZARSI IN PROJECT FINANCING**
(art. 153 comma 19 del D.Lgs. 163/2006 e s.m.i.)

PROGETTO PRELIMINARE

ELABORATO: INQUADRAMENTO TERRITORIALE	Rev. n°: GIUGNO 2015	Tav. 1
	SCALA: VARIE	

PROGETTISTA
Ing. CARRARINI Davide

IMPRESA
SCAMO S.r.l.
Edilizia Generale

AMPLIAMENTO CIMITERO